

# Filter Technology



**Fine filter  
chronique**

many  
r > 3600 NI/min  
druck 10 bar  
eratur 120°C  
0,01µm  
ne Art. Nr. 81810 bei  
Manometer von 1 bar  
6 Monaten

> 127 cfm  
ssure 145 psi  
erature 248°F  
0,01µm  
ge Art. No. 81810 when  
a difference of 14.5 psi.  
at the latest

> 3600 NI/min  
onement 10 bars  
ctionnement 120°C  
0,01 µm  
e du filtre fin Réf. 81810  
tres montrent une  
ion de 1 bar,  
s au plus tard

**SATA**  
& Co. KG  
Kornwestheim/Germany  
91982-4016-14



**Aktivkohlefilter  
activated charcoal filter  
Filtre à charbon actif**

Made in Germany

Wartungszeit bei 6 bar > 3600 NI/min  
max. Betriebs-Überdruck 10 bar  
max. Betriebstemperatur 60°C  
Nebelgehalt 0,005 mg/m³ (20°C, 7 bar)  
Zeit bei Aktivkohlepatrone Art. Nr. 85373  
spätestens nach 3 Monaten

Air flow at 87 psi > 127 cfm  
max. operating pressure 145 psi  
max. operating temperature 140°F  
oil content 0.005 mg/m³ (68°F, 105 psi)  
Replacement of activated charcoal cartridge  
Art. No. 85373 after 3 months at the latest

Zeit d'air à 6 bars > 3600 NI/min  
pression max. de fonctionnement 10 bars  
température max. de fonctionnement 60°C  
teneur en huile 0,005 mg/m³ (20°C, 7 bars)  
Remplacement de la cartouche à charbon actif  
Art. 85373 après 3 mois au plus tard

**SATA**  
SATA GmbH & Co. KG  
Postfach 20 - 70806 Kornwestheim/Germany  
91918-4016-14

# SATA® filter 100 prep™/101 prep™/103 prep™






## SATA filter 100 prep/101 prep/103 prep

### Technical Data

Air inlet: G 1/2" female thread
Air outlet: 1/4" male thread
Max. inlet operating pressure: 10.0 bar
Max. outlet operating pressure: 10.0 bar
Air flow at 6.0 bar: 800 NI/min
Max. ambient temperature: 50 °C

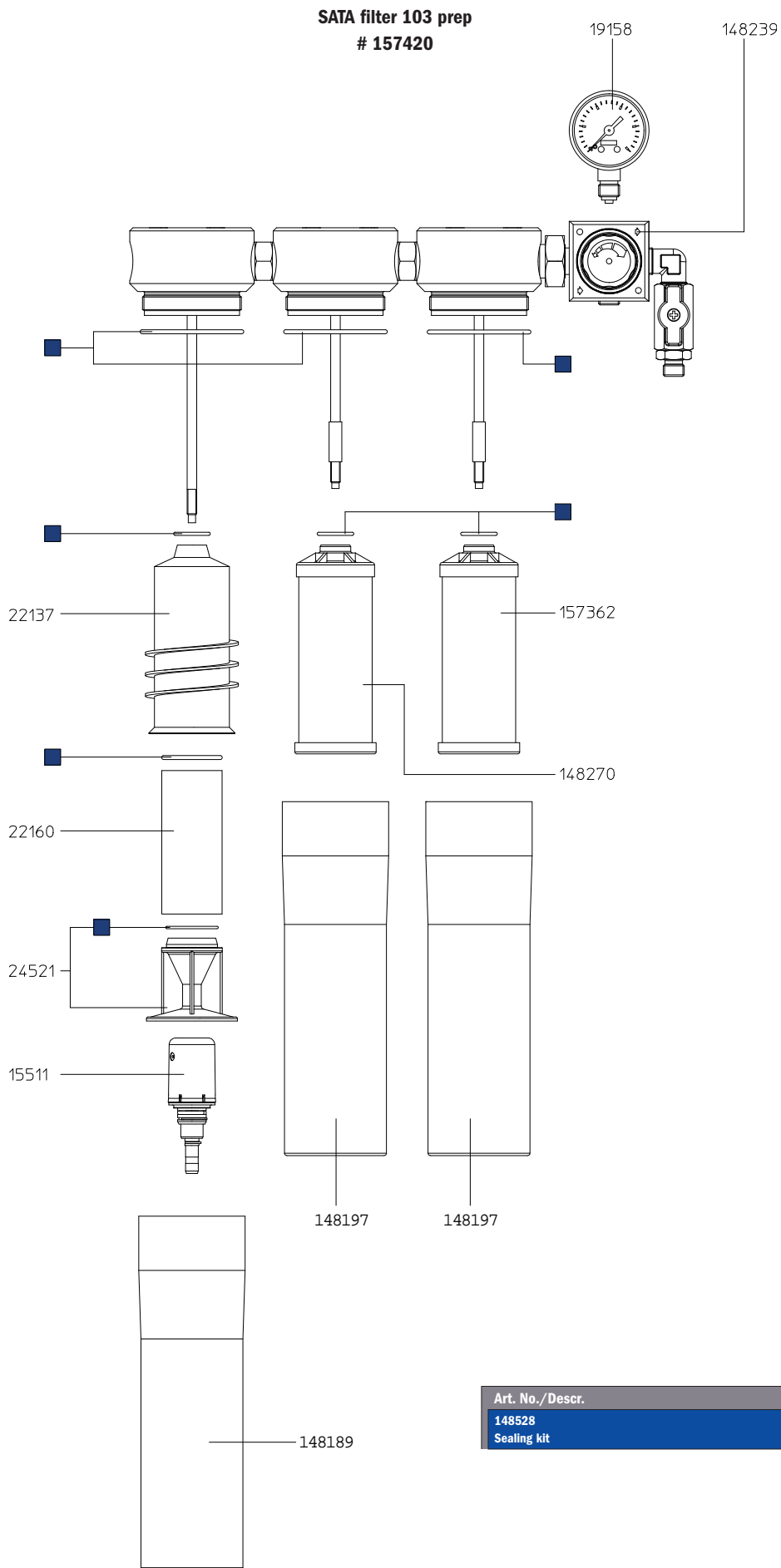
### Available versions

148247	SATA filter 100 prep double-stage sinter filter/fine filter with pressure regulator outlet (1 x 1/4" male thread)	
157412	SATA filter 101 prep single-stage activated charcoal filter to retrofit filter 100 prep to filter 103 prep	
157420	SATA filter 103 prep triple-stage sinter filter/fine filter/activated charcoal filter with pressure regulator and 1 outlet tap (1/4" male thread)	

All prices are recommended list prices. Errors, technical modifications and printing errors reserved.

# Spare Parts SATA® filter 103 prep™

Art. No./Descr.
15511
Automatic condensate drain valve
19158
Pressure gauge 0 - 10 bar, 50 mm
22137
Cyclone separator
22160
Sintered filter
24521
Condensate retainer with O-ring
148239
Pressure regulation valve
148270
Fine filter cartridge
157362
Activated charcoal cartridge
148189
Filter housing, drilled and coated
148197
Filter sleeve, processed and coated



All prices are recommended list prices. Errors, technical modifications and printing errors reserved.

# SATA® filter 414™/424™/434™/464™



## SATA filter 414/424/434/464

Technical Data	
	Air inlet: G 1/2" female thread
	Air outlet: 1/4 " male thread
	Max. inlet operating pressure: 15.0 bar
	Max. outlet operating pressure: 10.0 bar
	Air flow at 6.0 bar: 3600 NI/min
	Max. ambient temperature: 120 °C
	Max. ambient temperature with activated charcoal: 60 °C

Pressure regulator/water separator		
92288	SATA pressure reducer 420 with gauge 0-10 bar, air inlet and outlet G 1/2" (female thread)	
92213	SATA filter 414 single-stage sinter filter without pressure regulator, with outlet module (2 x 1/4" male thread)	
92254	SATA filter 414 L single-stage sinter filter without pressure regulator, for pipeline installation (G 1/2" female thread)	
92221	SATA filter 424 single-stage sinter filter, pressure regulator, outlet module (2 x 1/4" male thread)	
92262	SATA filter 424 L single-stage sinter filter, pressure regulator, for pipeline installation (G 1/2" female thread)	
Fine filter		
92239	SATA filter 434 single-stage fine filter without pressure regulator, with outlet module (2 x 1/4" male thread)	
92270	SATA filter 434 L single-stage fine filter without pressure regulator for pipeline installation (G 1/2" female thread)	
Activated charcoal filter to retrofit SATA filter 444		
141473	SATA filter 464 add-on kit single-stage activated charcoal filter without pressure regulator to retrofit SATA filter 444 to SATA filter 484	
92247	SATA filter 464 single-stage activated charcoal filter without pressure regulator, with outlet module (2 x 1/4" male thread)	

All prices are recommended list prices. Errors, technical modifications and printing errors reserved.

# Spare parts SATA® filter 424™/464™

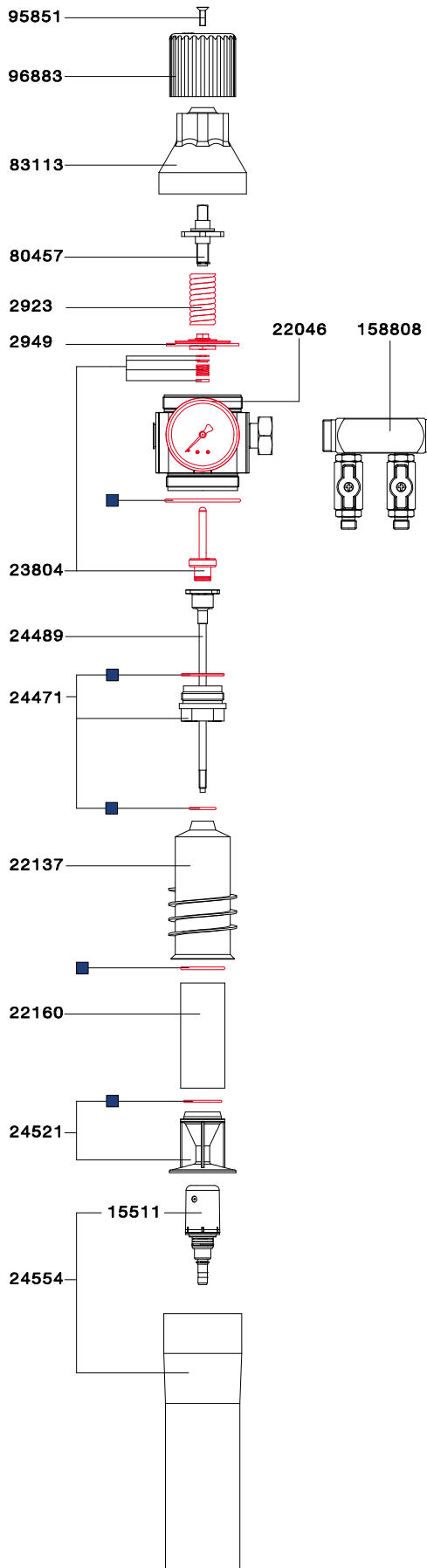
## SATA filter 424

Art. No./Descr.
2923
Pressure spring
2949
Diaphragm
15511
Automatic condensate drain valve
22046
Pressure gauge 0 - 10 bar, 50 mm
22137
Cyclone separator
22160
Sintered filter
23804
Pressure valve
24471
Plastic nut with 2 O-rings for SATA filter series 300 and 400
24489
Threaded rod with pressure valve head
24521
Condensate retainer with O-ring
24554
Filter sleeve with automatic discharge valve
80457
Spindle for SATA filter series 400
83113
Fixing nut
95851
Countersunk screw M 5 x 16
96883
Pressure adjustment screw
158808
Manifold 2x 1/4" (male thread)

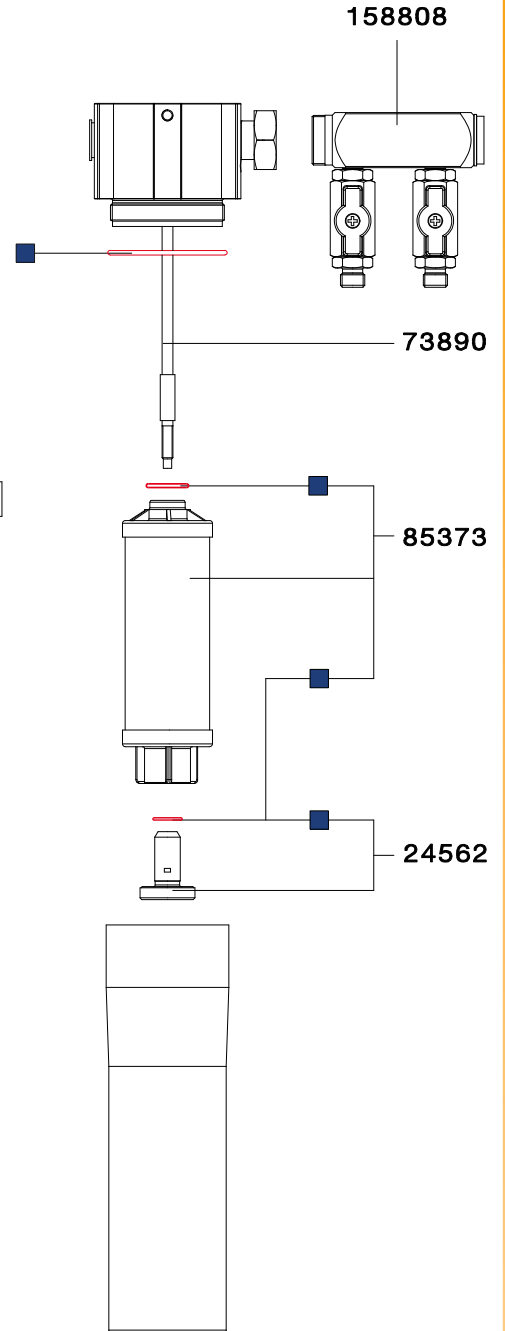
## SATA filter 464

Art. No./Descr.
24562
Adapter, cpl. with O-ring
73890
Threaded rod
85373
Activated charcoal cartridge
158808
Manifold 2x 1/4" (male thread)

## SATA filter 424 # 92221



## SATA filter 464 # 92247



Art. No./Descr.
94979
Service unit filter series 0/400
96750
Sealing kit

All prices are recommended list prices. Errors, technical modifications and printing errors reserved.

# SATA® filter 444™/474™/484™



## SATA filter 400

<b>Technical Data</b>	Air inlet: G 1/2" female thread
	Air outlet: 1/4" male thread
	Max. inlet operating pressure: 15.0 bar
	Max. outlet operating pressure: 10.0 bar
	Air flow at 6.0 bar: 3600 NI/min
	Max. ambient temperature: 120 °C
	Max. ambient temperature with activated charcoal: 60 °C

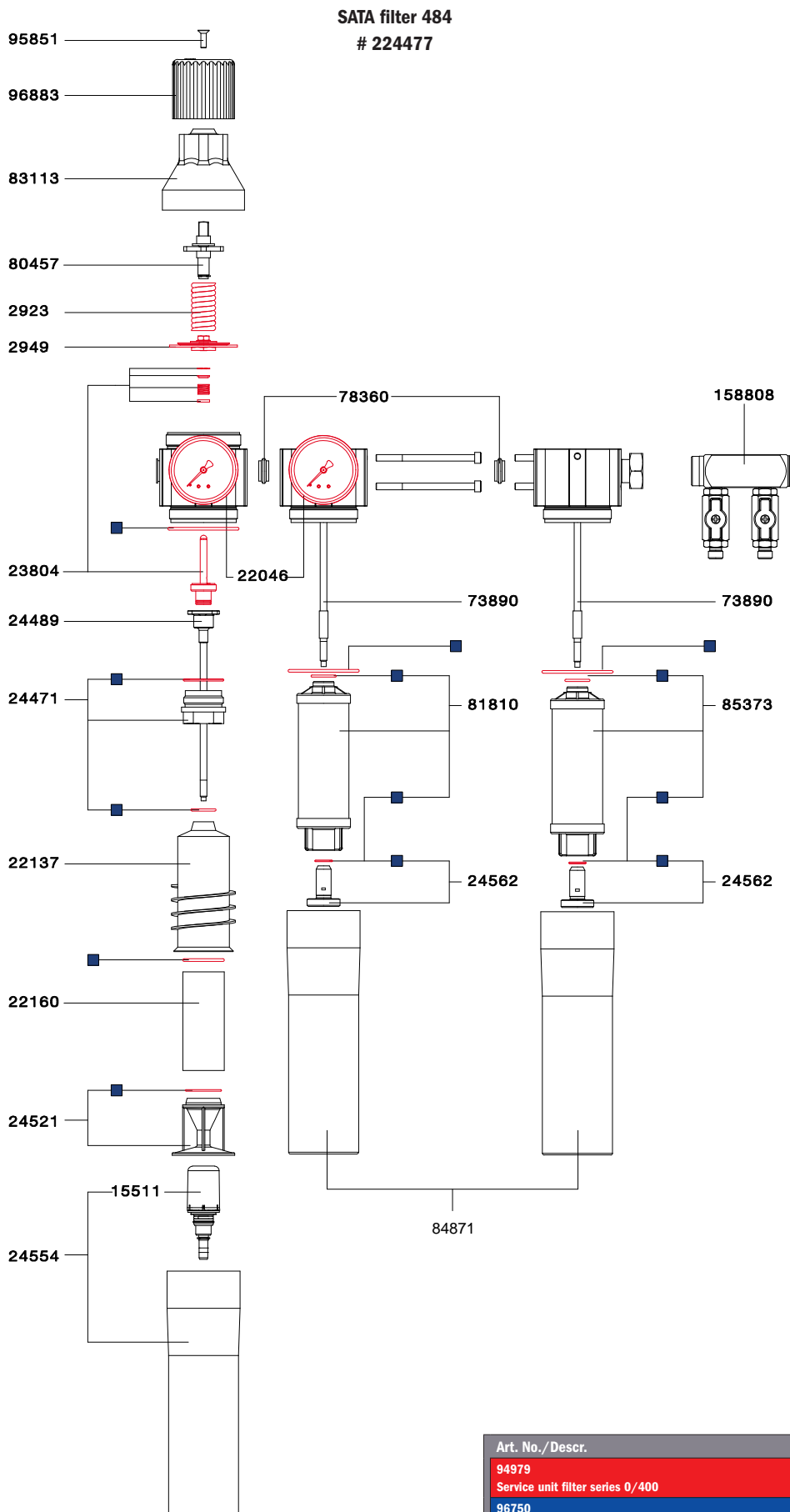
## Combi filter

92296	SATA filter 444 double-stage sinter filter/fine filter with pressure regulator and outlet module (2 x 1/4" male thread)	
92833	SATA filter 444 with carrying support double-stage sinter filter/fine filter, pressure regulator, outlet module (2 x 1/4" male thread)	
92304	SATA filter 444 L double-stage sinter filter/fine filter with pressure regulator, for pipeline installation (G 1/2" female thread)	
92312	SATA filter 474 double-stage fine filter/activated charcoal without pressure regulator with outlet module (2 x 1/4" male thread)	
92320	SATA filter 484 triple-stage sinter filter/fine filter/activated charcoal with pressure regulator and outlet module (2 x 1/4" male thread)	
129619	SATA filter 484 with floor carrying support triple-stage sinter filter/fine filter/activated charcoal/floor carrying support with pressure regulator and outlet module (2 x 1/4" male thread)	
173195	SATA filter 484 mobil in a case, sintered filter/fine filter/activated charcoal with pressure regulator, air inlet G 1/2 ext., air outlet (2x quick coupling)	

All prices are recommended list prices. Errors, technical modifications and printing errors reserved.

# Spare Parts SATA® filter 444™/474™/484™

Art. No./Descr.
2923
Pressure spring
2949
Diaphragm
15511
Automatic condensate drain valve
22046
Pressure gauge 0 - 10 bar, 50 mm
22137
Cyclone separator
22160
Sintered filter
23804
Pressure valve
24471
Plastic nut with 2 O-rings for SATA filter series 300 and 400
24489
Threaded rod with pressure valve head
24521
Condensate retainer with O-ring
24554
Filter sleeve with automatic discharge valve
24562
Adapter, cpl. with O-ring
73890
Threaded rod
78360
Gasket
80457
Spindle for SATA filter series 400
81810
Fine filter cartridge
83113
Fixing nut
84871
Filter sleeve
85373
Activated charcoal cartridge
95851
Countersunk screw M 5 x 16
96883
Pressure adjustment screw
158808
Manifold 2x 1/4" (male thread)



Art. No./Descr.
94979
Service unit filter series 0/400
96750
Sealing kit

All prices are recommended list prices. Errors, technical modifications and printing errors reserved.



## Accessories for SATA® filter series

Filter cartridges			
22160	Sintered filter for SATA filter series 100, 200, 300 and 400		
81810	Fine filter cartridge for SATA filter series 200, 300 and 400		
85373	Activated charcoal cartridge for SATA filter series 200, 300 and 400		
148270	Fine filter cartridge for SATA filter series 100 prep		
157362	Activated charcoal cartridge for SATA filter series 100 prep		
138933	Service kit for filter series 400: box for wall mounting with fine filter cartridge and activated charcoal cartridge		
206151	SATA filter timer for sinter filter		
Filter accessories			
13599	SATA quick coupling G 1/4" (female thread)		
158824	Manifold for extension with 2 ball valves for SATA filter series 400		
10934	Ball tap (Teflon) 1/2" male thread for air inlet SATA filter series 100, 300, 400 and cleaning devices		
9878	SATA mini filter 1/4" (male thread)		
Air quality control			
156299	SATA air tester, atomisation air quick tester		
7096	SATA air check set compressed air quality control device for optimum spray air		
7666	Diaphragm (packing unit 10 pieces) for SATA air check set		
133587	SATA Service Tacho for the paint spray booth, German/English, DIN A3	-	
215053	SATA filter cover (packing unit 4 pieces) for all SATA filter series		

All prices are recommended list prices. Errors, technical modifications and printing errors reserved.