

Models

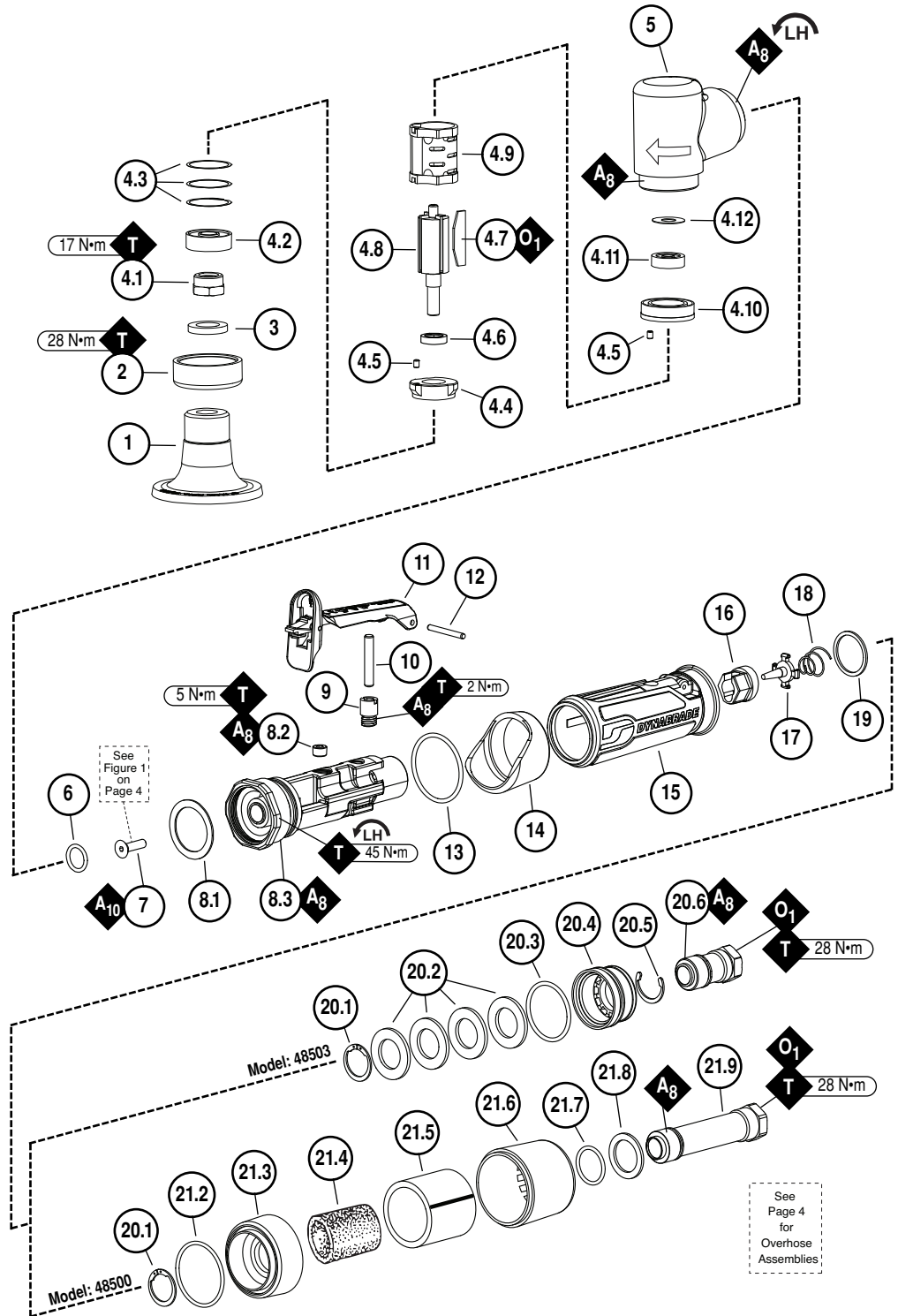
48500 – Extended Muffler

48503 – Standard Muffler

2" Disc Sander Complete Assembly

ITEM	P/N	DESCRIPTION	QTY
1	51348	2" LOCKING-TYPE PAD (1/4"-20)	1
2	01560	LOCK NUT	1
3	01580	FELT SEAL	1
4	01392	SHORT BLOCK ASSEMBLY	1
4.1	50133	ADAPTER (1/4"-20)	1
4.2	02649	BEARING	1
4.3	54529	SHIM PACK (3/PKG)	AR
4.4	01478	FRONT BEARING PLATE	1
4.5	50767	PIN	2
4.6	01479	SPACER	1
4.7	01480	VANE SET (4/PKG)	1
4.8	01594	ROTOR	1
4.9	01476	CYLINDER	1
4.10	02673	REAR BEARING PLATE	1
4.11	02696	BEARING	1
4.12	02679	SHEILD	1
5	01546	HOUSING	1
6	95523	O-RING	1
7	95710	SCREW	1
8	45309	THROTTLE BODY ASSEMBLY	1
8.1	01548	GASKET	1
8.2	01437	PLUG	1
8.3	45309	CORE	1
9	45315	THROTTLE BUSHING	1
10	97045	PIN	1
11	45263	SAFETY THROTTLE LEVER	1
12	97060	PIN	1
13	96077	O-RING	1
14	01558	COLLAR	1
15	45243 45242	EXTERIOR HOUSING - MDL 48500 EXTERIOR HOUSING - MDL 48503	1
16	45310	SEAL	1
17	58365	TIP VALVE	1
18	01468	SPRING	1
19	01564	AIR CONTROL RING	1
21	94535	STANDARD MUFFLER ASSEMBLY	1
20.1	95711	SNAP RING	1
20.2	01486	FELT SILENCER	4
20.3	96065	O-RING	1
20.4	01446	AIR DEFLECTOR	1
20.5	95620	RETAINING RING	1
20.6	01578	INLET ADAPTER ASSEMBLY	1
21	94520	EXTENDED MUFFLER ASSEMBLY	1
21.2	95438	O-RING	1
21.3	94521	MUFFLER BASE	1
21.4	94524	SINTERED BRONZE MUFFLER	1
21.5	94525	FELT SILENCER	1
21.6	94522	MUFFLER CAP	1
21.7	95375	O-RING	1
21.8	94526	SPACER	1
21.9	94523	INLET ADAPTER ASSEMBLY	1
-	96076	WRENCH - 12 MM	1

AR – "As Required"



KEY	
O	Oil: O ₁ = Air Lube
A	Adhesive: A ₂ = Loctite #271 A ₈ = Loctite #567 A ₁₀ = Loctite #243
T	Torque: N·m x 8.85 = In. - lbs.

Always follow adhesive manufacturers cleaning and priming recommendations.