

Electric Right Angle Polisher

Air Tool Manual – Safety, Operation and Maintenance

SAVE THIS DOCUMENT, EDUCATE ALL PERSONNEL

Models:

51590 – RPM 900 - 2,500

51591 – RPM 900 - 2,500

51592 – RPM 900 - 2,500



FIND THE MOST CURRENT OFFERING OF SUPPORT DOCUMENTS AND ACCESSORIES AT WWW.DYNABRADE.COM

⚠ WARNING

Read and understand this tool manual before operating your air tool. Follow all safety rules for the protection of operating personnel as well as adjacent areas. Always operate, inspect and maintain this tool in accordance with the American National Standards Institute (ANSI) Safety Code for Portable Air Tools – B186.1. For additional safety information, refer to Safety Requirements for the Use, Care and Protection of Abrasive Wheels – ANSI B7.1, Code of Federal Regulation – CFR 29 Part 1910, European Committee for Standards (EN) Hand Held Non-Electric Power Tools – Safety Requirements and applicable State and Local Regulations.

SAFETY LEGEND

	⚠ WARNING Read and understand tool manual before work starts to reduce risk of injury to operator, visitors, and tool.	⚠ WARNING Practice safety requirements. Work alert, have proper attire, and do not operate tools under the influence of alcohol or drugs.	
	⚠ WARNING Eye protection must be worn at all times, eye protection to conform to ANSI Z87.1.	⚠ WARNING Ear protection to be worn when exposure to sound, exceeds the limits of applicable Federal, State or local statutes, ordinances and/or regulations.	
	⚠ WARNING Respiratory protection to be used when exposed to contaminants that exceed the applicable threshold limit values required by law.	⚠ WARNING Air line hazard, pressurized supply lines and flexible hoses can cause serious injury. Do not use damaged, frayed or deteriorated air hoses and fittings.	

⚠ WARNING

Some dust created by sanding, grinding, drilling, and other construction activities contain chemicals known to cause cancer, birth defects or other reproductive harm. Some examples of these chemicals are:

- Lead from lead-based paints
- Crystalline silica from bricks and cement and other masonry products
- Arsenic and chromium from chemically treated lumber

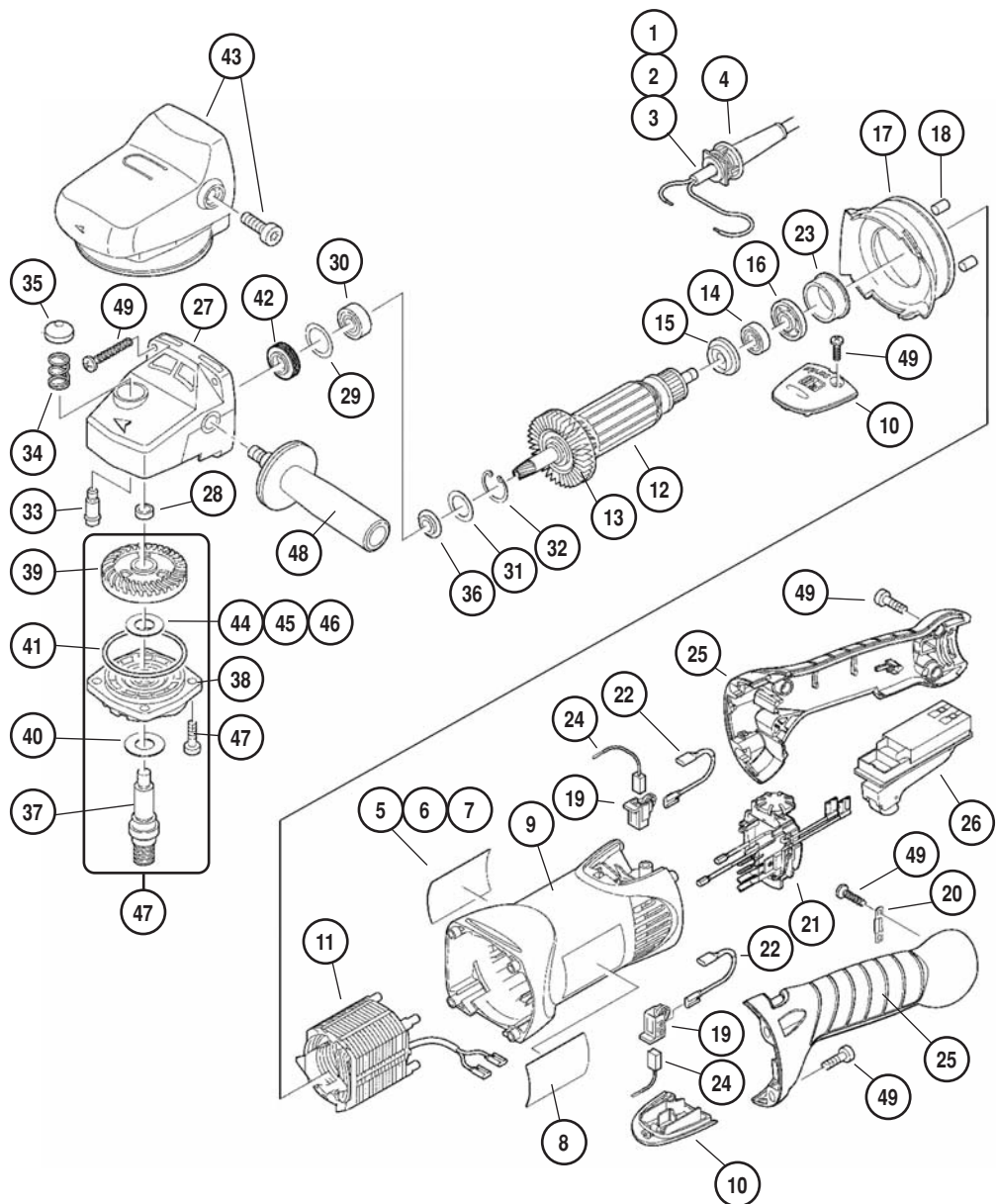
Your risk from these exposures varies, depending on how often you do this type of work. To reduce your exposure to these chemicals: work in a well ventilated area, and work with approved safety equipment, such as those dust masks that are specially designed to filter out microscopic particles.



DYNABRADE Electrical Polisher Model No. 51590, 51591, 51592

SPARE PARTS LIST

ITEM	P/N	DESCRIPTION
1	42760	Power Cord - Model 51590
2	42761	Power Cord - Model 51591
3	42707	Power Cord - Model 51592
4	42762	Protecting Cover
5	42763	Model/Serial Number Label - Model 51590
6	42764	Model/Serial Number Label - Model 51591
7	42708	Model/Serial Number Label - Model 51592
8	42765	Tool Label
9	42766	Red Motor Cover
10	42767	Cover
11	42768	Field 230V
12	42769	Armature
13	42770	Fan
14	42771	Ball Bearing
15	42772	Insulating Disc
16	42773	Magnetic Ring
17	42774	Airguide
18	42775	Holding Down Device
19	42776	Brush Holder
20	42777	Cable Fastening Clamp
21	42778	Condenser Group
22	42779	Wire
23	42780	Bearing Sleeve
24	42781	Brush
25	42782	Switch handle
26	42783	Switch
27	42784	Gear Box
28	42785	Needle Bushing
29	42786	Washer
30	42787	Ball Bearing
31	42788	Disc
32	42789	Locking Ring
33	42790	Locking Bolt
34	42791	Spring
35	42792	Push Button
36	42793	Ball Bearing Cover
37	42794	M14 Spindle
38	42795	Coverplate
39	42796	Gear
40	42797	Disc
41	42798	Seal Ring
42	42799	Grease Retain Disc
43	42700	Cover Kit
44	42701	Washer
45	42702	Washer
46	42703	Washer
47	42704	Spindle
48	42705	Auxiliary Handle
49	42706	Screw Set



Visit Our Web Site: www.dynabrade.com

Email: Customer.Service@Dynabrade.lu



DYNABRADE, INC., 8989 Sheridan Drive • Clarence, NY 14031-1419 • Phone: (716) 631-0100 • Fax: 716-631-2073 • International Fax: 716-631-2524
DYNABRADE EUROPE S.à.r.l., Zone Artisanale Op Tomm 6 • L-5485 Wormeldange—Haut, Luxembourg • Telephone: 352 76 84 94 1 • Fax: 352 76 84 95 1